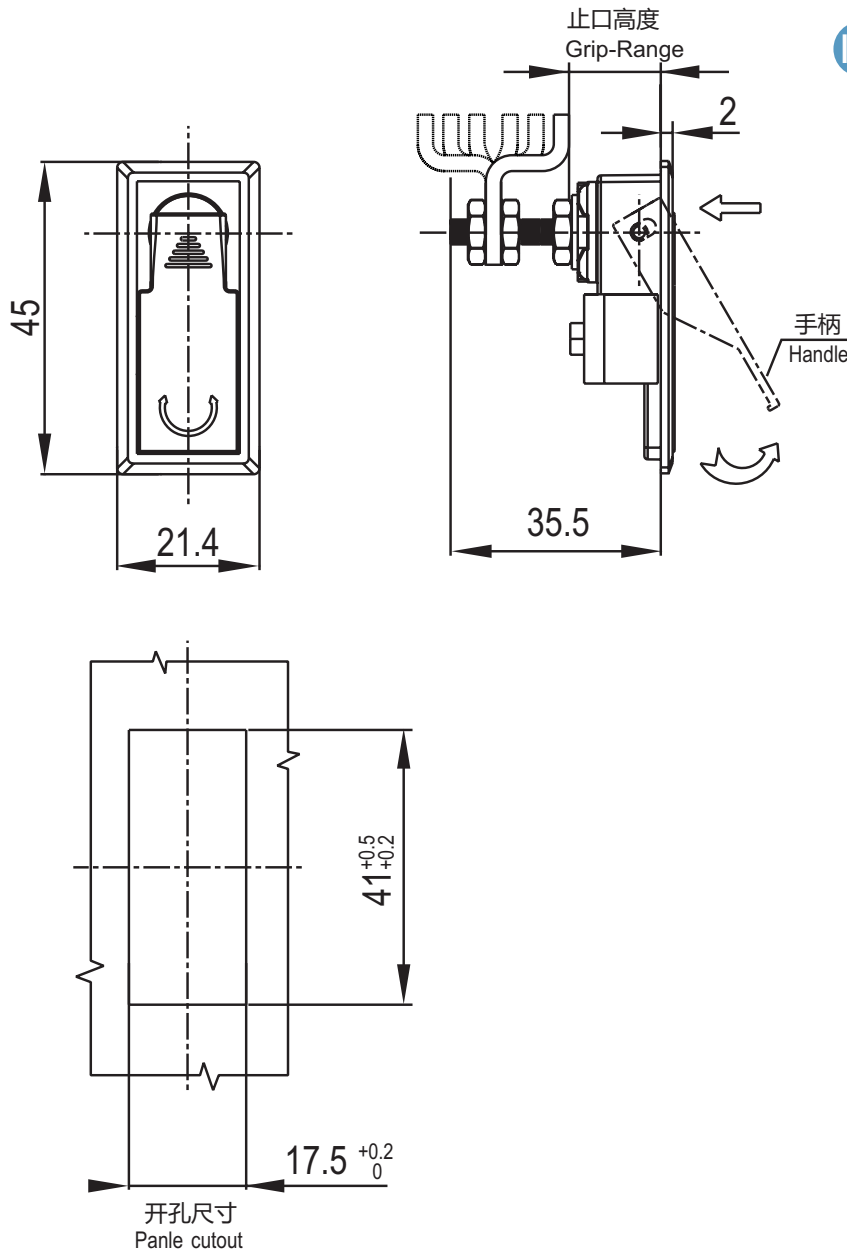


A-1544

Compression latch



IP65



1. Material and surface treatment:
Lock body, handle: Zamak DIN-EN 1774-ZnAl4Cu1
Steel bolt: iron galvanized
Sealing ring: EPDM foam.

2. Performance parameters:
Protection class: IP65
Handle bearing tension value: $\leq 245N$
Maximum static load: 220N

1. 材质及表面处理:
锁体, 手柄: 5# 锌合金
钢栓: 铁镀锌
密封圈: EPDM 发泡胶。

2. 性能参数:
防护等级: IP65
手柄承载拉力值: $\leq 245N$
最大静载荷: 220N

如需获得产品 3D 模型图, 请联系 WWW.FORND.COM

止口高度 Grip-Range		锁芯类型 Cylinder Style	喷塑亚光黑 Black powder coated	亮铬 Bright Chrome
正 Pawl Forward MIN~MAX	反 Pawl Reversed MIN~MAX			
4.5-10.5	34.5-40.5	不带锁芯 Non-locking	A-1544-201-40	A-1544-201-30
10.5-16.5	28.5-34.5		A-1544-202-40	A-1544-202-30
16.5-22.5	22.5-28.5		A-1544-203-40	A-1544-203-30