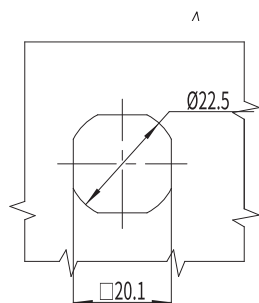
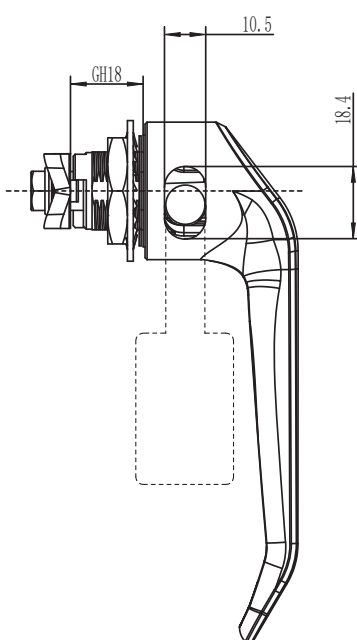
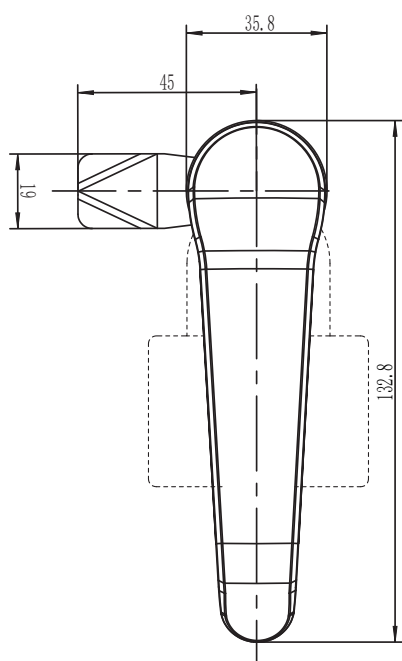


**B-1308**

L handle lock



开孔尺寸  
Panel Outout

IP65

RL

S  
SUS304 SERIES



**选型 Model selection**

A1SUS304  
30 电镀铬  
30Electrochrome plating  
40 粉末涂层黑  
40Powder coated black

**B-1308-LH-A1**

L 代表钢柱长度  
L represents the length of the steel bolt  
H 代表有效高度  
H represents effective height

1. Material and surface treatment:  
Lock body, handler: Zamak DIN-EN 1774-ZnAl4Cu1 or SUS304  
Steel bolt: iron galvanized or SUS304  
Sealing ring: EPDM foam

2. Performance parameters:  
Protection class: IP65

3. Remarks:  
Stainless steel Padlockable on request

1. 材质及表面处理:  
锁体, 手柄: 5#锌合金 SUS304  
钢柱: 铁镀锌或 SUS304  
密封圈: EPDM发泡胶。

2. 性能参数: 防护等级: IP65

3. 备注:  
配不锈钢挂锁

如需获得产品 3D 模型图, 请联系 WWW.FORND.COM