

Rod Control Swinghandle

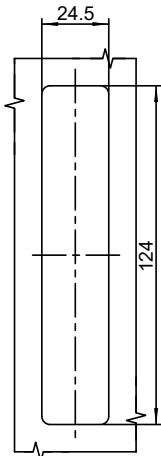
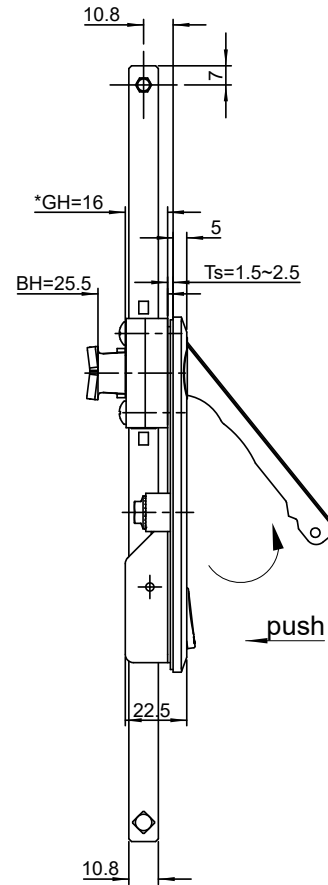
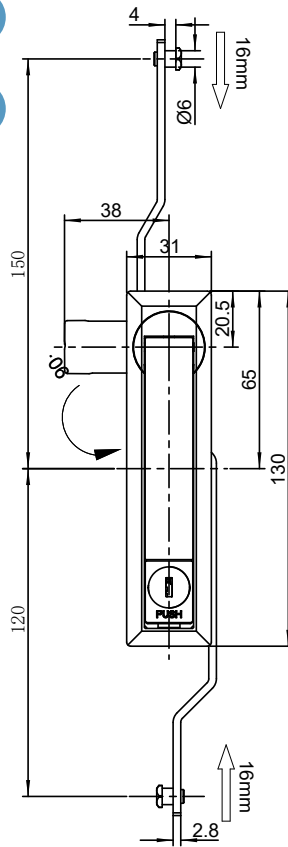
A-1209



RL

5

IP65



开孔尺寸
Cut out

请 联 系 W W W . F O R N D . C O M 如 需 获 得 产 品 3 D 模 型 图

1. Material and surface treatment:
Lock body, handle, dust cover : Zamak
DIN-EN 1774-ZnAl4Cu1
Steel bolt: iron galvanized
Sealing ring: EPDM foam.

2. Performance parameters:
Protection class: IP65
Handle bearing tension value: $\leq 350\text{N}$
Handle bearing torque value: $\leq 25\text{N} \cdot \text{m}$

3. Remark:
Padlockable on request
Default K333 key

1. 材质及表面处理:
锁体, 手柄, 防尘盖: 5# 锌合金喷塑黑
螺栓: 铁镀锌
密封圈: EPDM发泡胶。

2. 性能参数:
防护等级: IP65
手柄承载拉力值: $\leq 350\text{N}$
手柄承载扭矩值: $\leq 25\text{N} \cdot \text{m}$

3. 备注:
可配挂锁
默认K333钥匙

Version B (两点拉杆型 2Prod control)		Version C (三点拉杆型 3Prod control)	
亚光漆 Matt Pnish paint	喷塑亚光黑 Black powder coated	亚光漆 Matt Pnish paint	喷塑亚光黑 Black powder coated
A-1209-2001-50	A-1209-2001-40	A-1209-3001-50	A-1209-3001-40