

Rod Control Swinghandle

**A-1224**

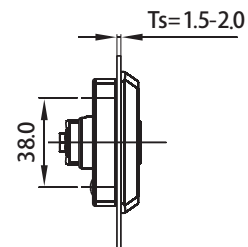
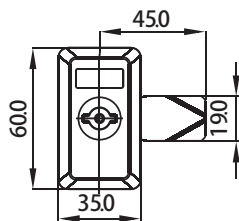


RL

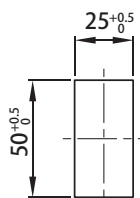
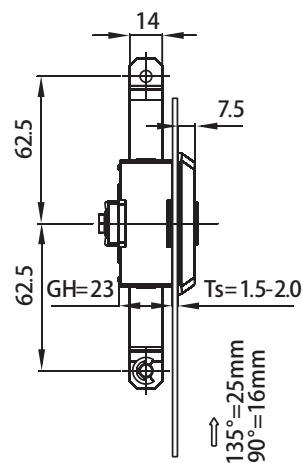
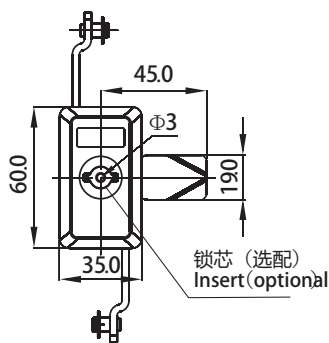
锁舌型  
camcontrol

5m

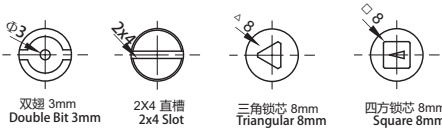
IP65



拉杆型  
Rodcontrol



开孔尺寸  
Panel Cutout



请 联 系 W W W . F O R N D . C O M 如 需 获 得 产 品 3 D 模 型 图

1. Material and surface treatment:  
Lock body, handle: PA66+30%GF;  
Zamak DIN-EN 1774-ZnAl40Cu1  
Steel bolt: iron galvanized  
Sealing ring: EPDM foam.

2. Performance parameters:  
Protection class: IP65  
Input torque value: ≤ 10N.m

1. 材质及表面处理:  
锁体、锁芯: #5 锌合金  
钢栓: 铁镀锌  
密封圈: EPDM 发泡胶。

2. 性能参数:  
防护等级: IP65  
输入扭矩值: ≤ 10N.m

锁芯类型 Insert type	Version A (锁舌型 Cam control)	Version B (两点拉杆型 2Prod control)	Version C (三点拉杆型 3Prod control)
双翅 3mm Double Bit 3mm	A-1224-1013-40	A-1224-2013-40	A-1224-3013-40
双翅 5mm Double Bit 5mm	A-1224-1015-40	A-1224-2015-40	A-1224-3015-40
2x4 直槽型 2x4 Slot	A-1224-1024-40	A-1224-2024-40	A-1224-3024-40
三角 8mm Triangular 8mm	A-1224-1038-40	A-1224-2038-40	A-1224-3038-40
四方 8mm Square 8mm	A-1224-1048-40	A-1224-2048-40	A-1224-3048-40