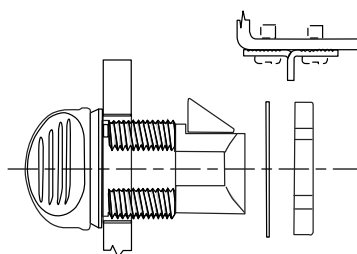
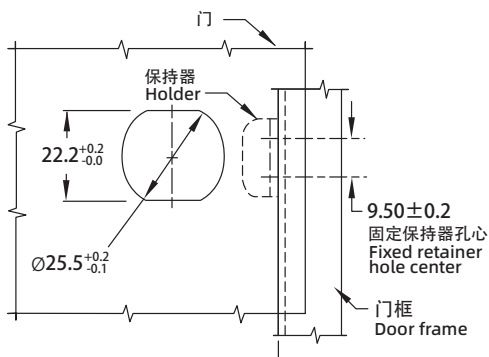
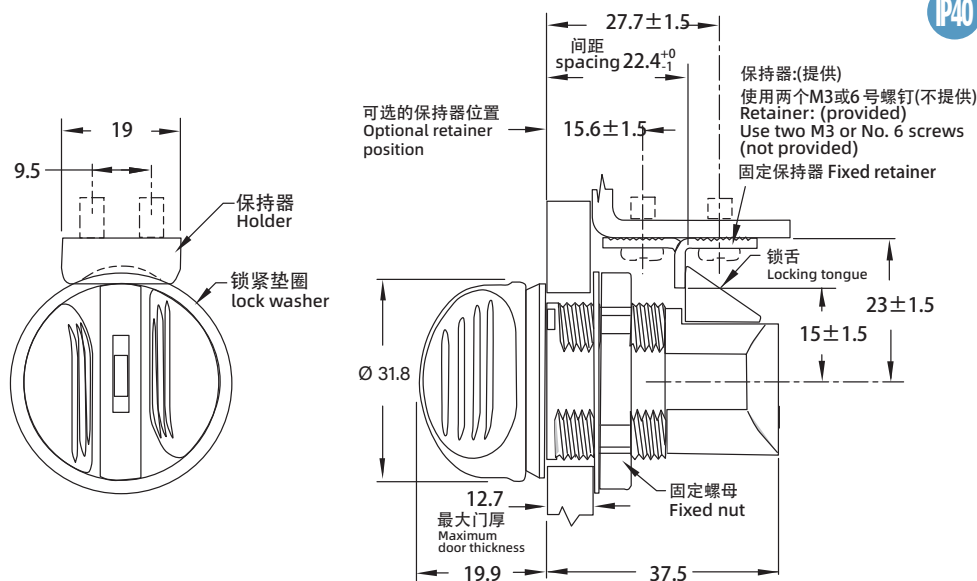


# 撞击锁 Push to close latch

**B-1706**

Knob latch

IP40



1. Material and surface treatment:  
Lock body : Glass fiber nylon and acetal

2. Performance parameters:  
Protection class: IP40  
Maximum working load: 425N  
Working temperature range: -20 to 65 °C  
Flame retardant grade: UL94-HB

3. Remarks:  
Default CH751 key

1. 材质及表面处理:  
锁体: 玻璃纤维尼龙和乙缩醛

2. 性能参数:  
防护等级: IP40  
最大工作载荷: 425N  
工作温度范围: -20°C到 65°C  
阻燃等级: UL94-HB

3. 备注:  
默认 CH751 钥匙