

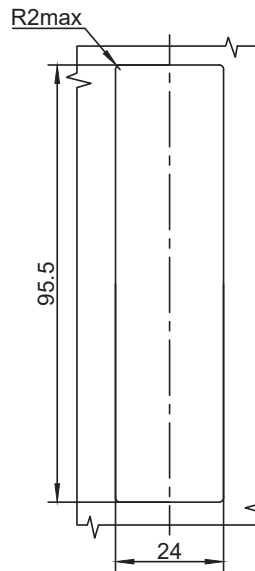
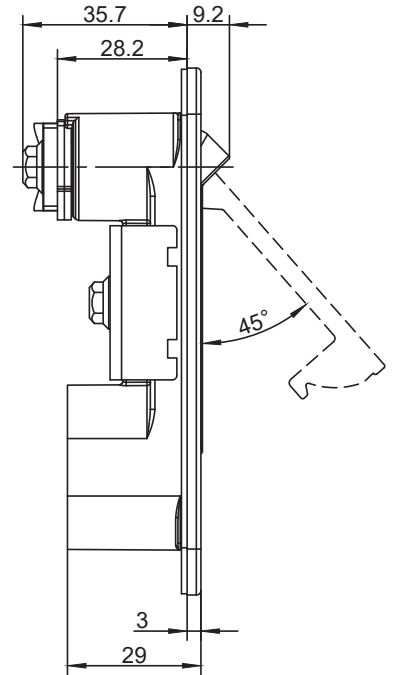
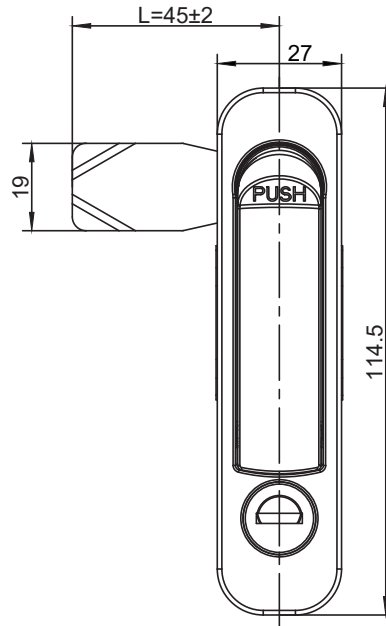
Swing handle lock

A-1118



RL

IP65



如需获得产品3D模型图，请联系 WWW.FORND.COM

1. Material and surface treatment:
Lock body, handle dust cover : Zamak DIN-EN 1774-ZnAl4Cu1
Steel bolt: iron galvanized
Sealing ring: EPDM foam.

2. performance parameter
Protection level: IP65
Handle bearing tension value: $\leq 250\text{N}$
Handle bearing torque value: $\leq 30\text{N}\cdot\text{m}$
Maximum static load: 300N

3. Function Description:
Open the handle upwards and rotate it 90° to achieve opening

3. Remarks:
Optional dedicated key
Default K200 key, Optional 160 keys

1.材质及表面处理:
锁体, 手柄: 5#锌合金
钢栓: 铁镀锌
密封圈: EPDM发泡胶。

2.性能参数
防护等级: IP65
手柄承载拉力值: $\leq 340\text{N}$
手柄承载扭矩值: $\leq 11\text{N}\cdot\text{m}$
最大静载荷: 270N

3.功能描述:
手柄向上打开, 90°旋转实现开启

3.备注:
专用钥匙可选
默认 K200钥匙, 选配 160钥匙

| | |
|--------------------------|--|
| 喷漆黑 Powder coating black | 纳米喷漆 (银亚光) NM spray painting (matte silver) |
| A-1118-40 | A-1118-50 |