

Swing handle lock

**A-1130**

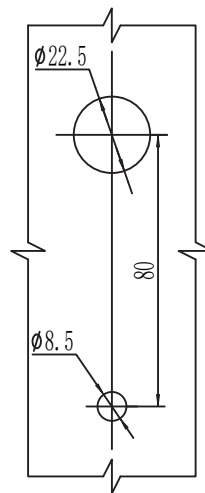
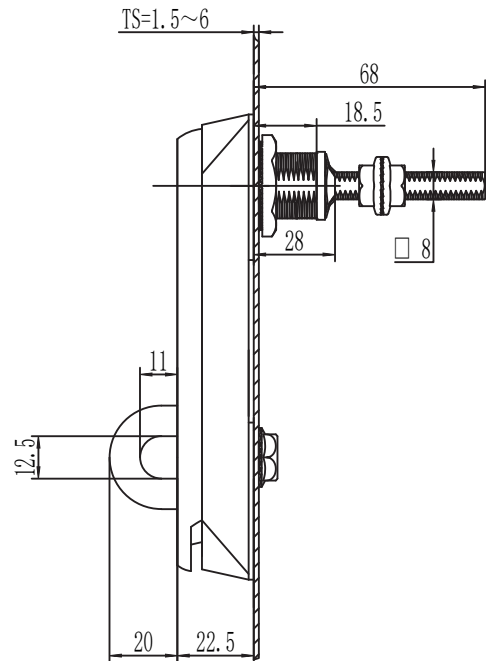
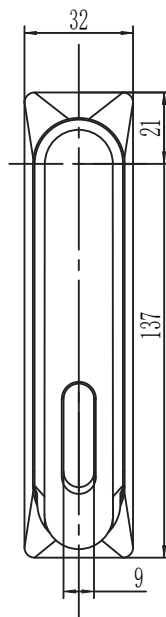


RL

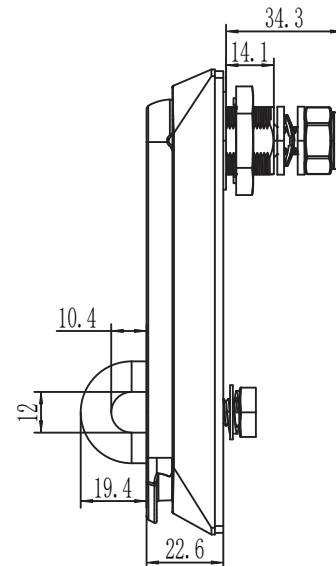


SERIES

IP66



开孔尺寸  
Panel cut out



如需获得产品3D模型图，请联系 WWW.FORND.COM

1. Material and surface treatment:  
Lock body, handle : Zamak DIN-EN 1774-ZnAl4Cu1 or SUS304  
Steel bolt: iron galvanized or SUS304  
Sealing ring: EPDM foam.

2. Performance parameters:  
Protection class: IP66  
Handle bearing tension value:  $\leq 280\text{N}$   
Handle bearing torque value:  $\leq 42\text{N}\cdot\text{m}$   
Maximum static load: 300N

1. 材质及表面处理:  
锁体, 手柄: 5#锌合金或 SUS304  
钢栓: 铁镀锌或 SUS304  
密封圈: EPDM发泡胶。

2. 性能参数: 防护等级: IP66  
手柄承载拉力值:  $\leq 280\text{N}$   
手柄承载扭矩值:  $\leq 42\text{N}\cdot\text{m}$   
最大静载荷: 300N

	锌合金 Zinc alloy	不锈钢 SUS304
	亮铬 Bright chrome plating	拉丝抛光 Polishing
固定间距 Fixed spacing	A-1130-10-30	A-1130-10-A1
可调间距 Adjustable spacing	A-1130-20-30	A-1130-20-A1