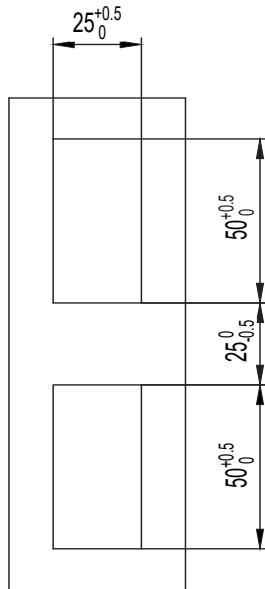
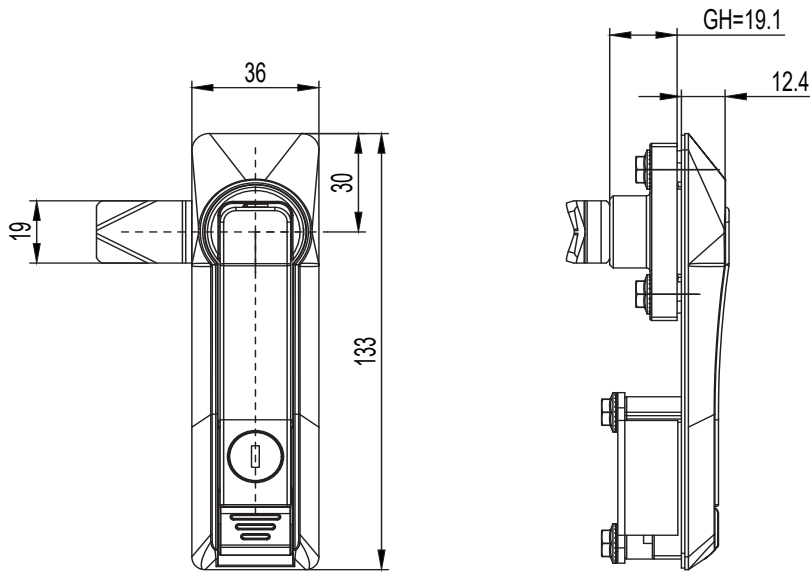


A-1208

Swing handle lock



开孔尺寸
Cut out

RL

🔒

IP65



1. Material and surface treatment:
Lock body, handle, dust cover : Zamak
DIN-EN 1774-ZnAl4Cu1
Steel bolt: iron galvanized
Sealing ring: EPDM foam.

2. Performance parameters:
Protection class: IP65
Handle bearing tension value: $\leq 340\text{N}$
Handle bearing torque value: $\leq 28\text{N}\cdot\text{m}$

1. 材质及表面处理:
锁体, 手柄, 防尘盖: 5#锌合金喷塑黑
钢栓: 铁镀锌
密封圈: EPDM发泡胶。

2. 性能参数:
防护等级: IP65
手柄承载拉力值: $\leq 340\text{N}$
手柄承载扭矩值: $\leq 28\text{N}\cdot\text{m}$

如需获得产品 3D 模型图，请联系 WWW.FORND.COM

Version A(锁舌型 Cam control)

| 亚光漆 Matt Pnish paint | 喷塑亚光黑 Black powder coated |
|-------------------------|------------------------------|
| A-1208-1001-50 | A-1208-1001-40 |