

Swing handle lock

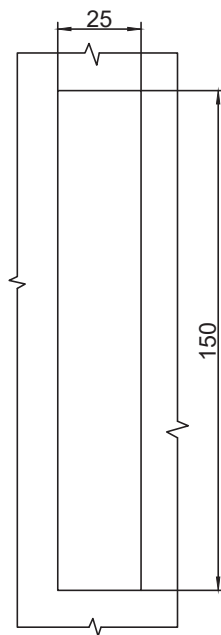
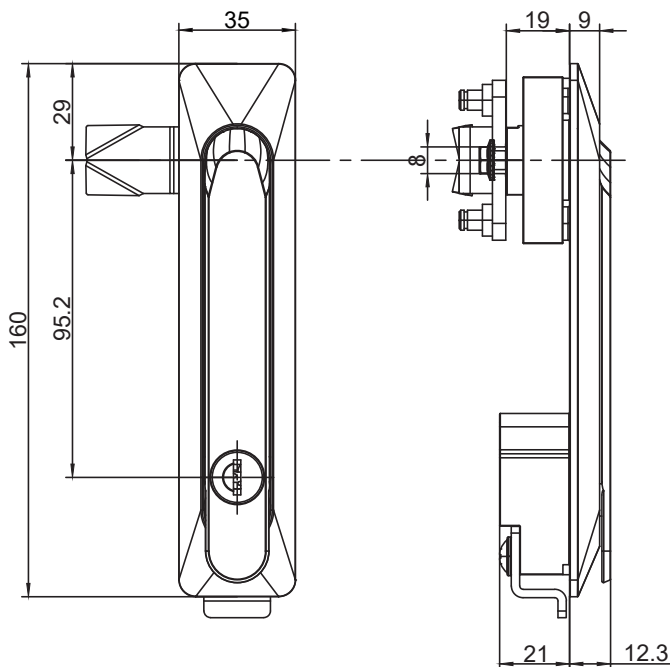
A-1113



RL

🔒

IP65



开孔尺寸
Cut out

如需获得产品3D模型图，请联系 WWW.FORND.COM

1. Material and surface treatment:
Lock body, handle: Zamak DIN-EN 1774-ZnAl4Cu1 or PA66+30%GF
Steel bolt: iron galvanized or SUS304
Sealing ring: EPDM foam.
2. Performance parameters:
Protection class: IP65
Handle bearing tension value: $\leq 390\text{N}$
Handle bearing torque value: $\leq 12\text{N}\cdot\text{m}$
Maximum static load: 300N
3. Function Description:
Open the handle upwards and rotate it 90° to achieve opening
4. Remarks:
Default key K333

1. 材质及表面处理:
锁体, 手柄: 5#锌合金或 PA66+30%GF
钢栓: 铁镀锌或 SUS304
密封圈: EPDM发泡胶。
2. 性能参数:
防护等级: IP65
手柄承载拉力值: $\leq 390\text{N}$
手柄承载扭矩值: $\leq 12\text{N}\cdot\text{m}$
最大静载荷: 300N
3. 功能描述:
手柄向上打开, 90°旋转实现开启
4. 备注:
默认钥匙 K333

尺寸 Size	全锌合金 Zinc alloy
大号 Large	A-1113-50-40