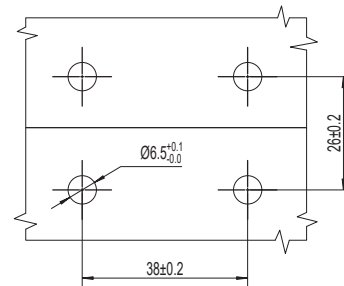
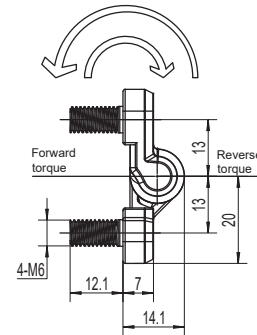
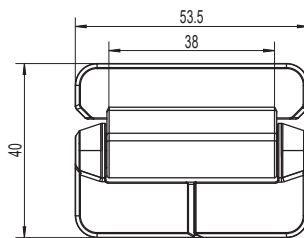
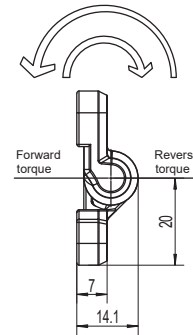
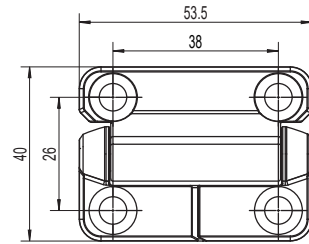


Screw-on Torque Hinge

H1-2421



如需获得产品 3D 模型图，请联系 WWW.FORND.COM

1. Material and surface treatment:
Main body : Zamak DIN-EN 1774-ZnAl4Cu1

1. 材质及表面处理:
主体: 5#锌合金

对称扭矩 N.m Symmetric N.m		
麻面黑 Black Textured Powder Coated	亮铬 Bright Chrome	对称扭矩 Symmetrical Torque
H1-2421-18-42	H1-2421-18-30	1.8
H1-2421-23-42	H1-2421-23-30	2.3
H1-2421-34-42	H1-2421-34-30	3.4
H1-2421-45-42	H1-2421-45-30	4.5

不对称扭矩 N.m Asymmetric N.m			
麻面黑 Black Textured Powder Coated	亮铬 Bright Chrome	向前扭矩 N.m Forward Torque N.m	反向扭矩 N.m Reverse Torque N.m
H1-2421-2314F-42	H1-2421-2314F-30	2.3	1.4
H1-2421-3420F-42	H1-2421-3420F-30	3.4	2.0
H1-2421-4527R-42	H1-2421-4527R-30	4.5	2.7
H1-2421-1423R-42	H1-2421-1423R-30	1.4	2.3
H1-2421-2034R-42	H1-2421-2034R-42	2.0	3.4
H1-2421-2745R-42	H1-2421-2745R-42	2.7	4.5