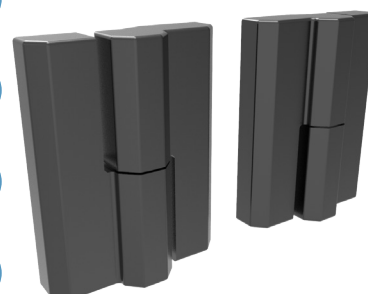
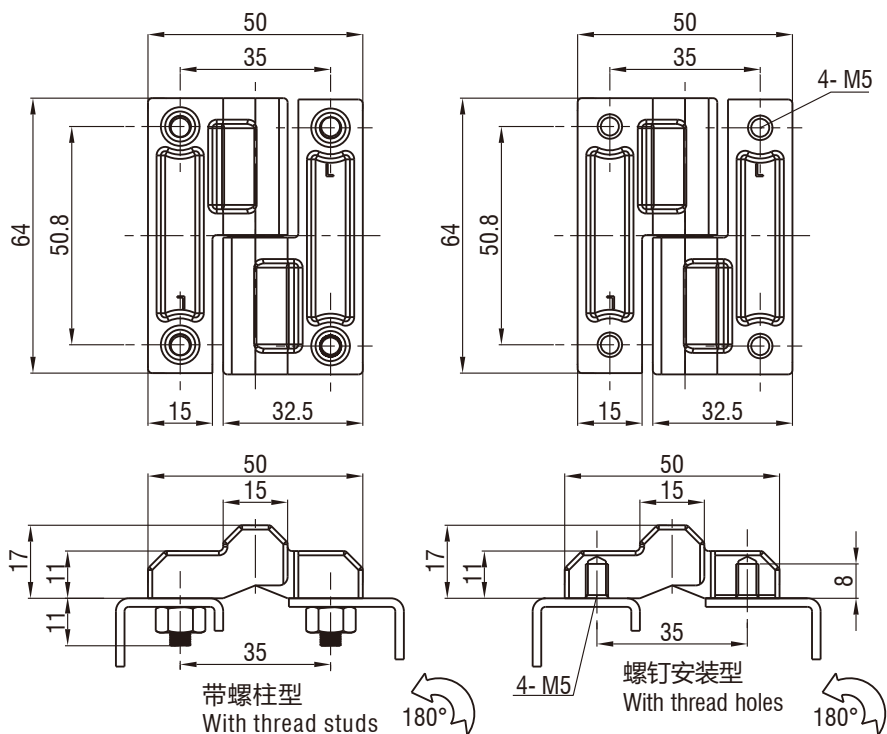


H1-2330

Screw-on Hinge



	带螺柱型 With thread studs			带螺孔型 With thread hole		
	粉末涂层黑 Powder coated black	电镀亮铬 Bright Chrome	SUS304	粉末涂层黑 Powder coated black	电镀亮铬 Bright Chrome	SUS304
A 型 (左装) Version A (left)	H1-2330-L500-40	H1-2330-L500-30	H1-2330-L500-A1	H1-2330-L501-40	H1-2330-L501-30	H1-2330-L501-A1
B 型 (右装) Version B (right)	H1-2330-R500-40	H1-2330-R500-30	H1-2330-R500-A1	H1-2330-R501-40	H1-2330-R501-30	H1-2330-R501-A1

1. Material and surface treatment:
Main body : Zamak DIN-EN 1774-ZnAl4Cu1
or SUS304

1. 材质及表面处理:
主体: 5#锌合金或 SUS304

如需获得产品 3D 模型图，请联系 WWW.FORND.COM