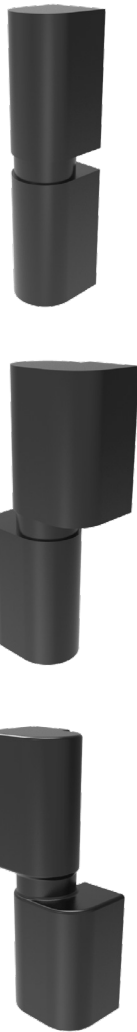
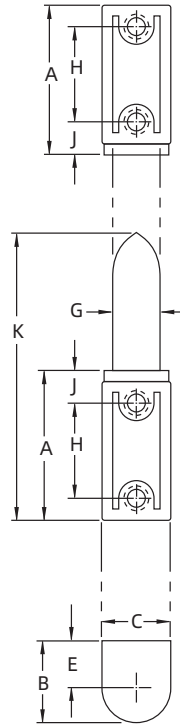


Screw-on Hinge

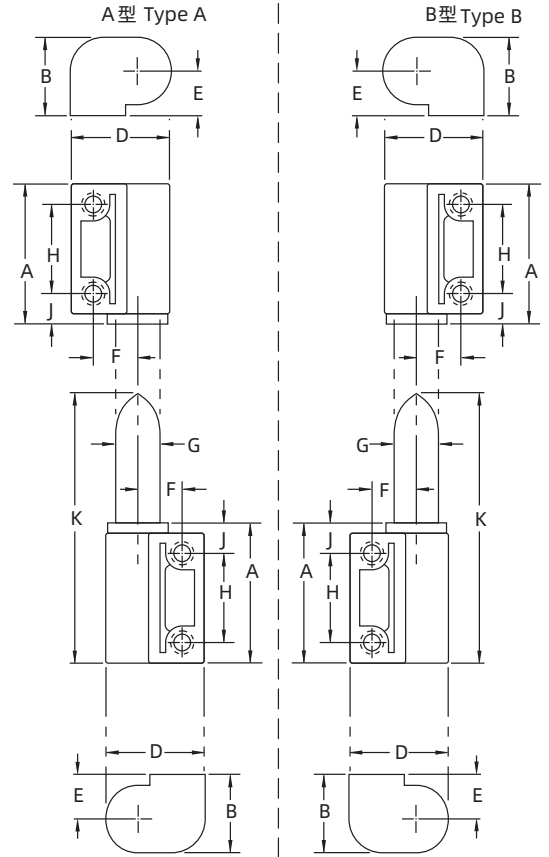
H1-2304



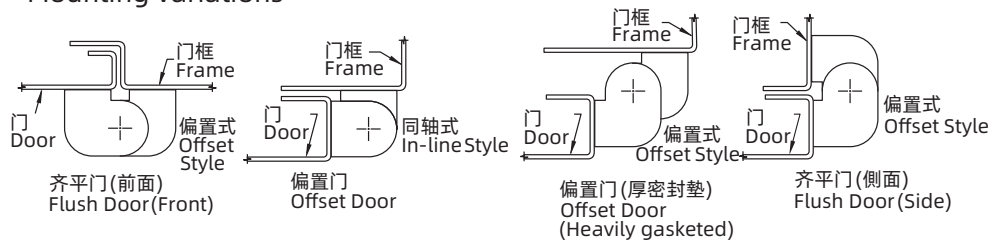
RL 同轴接合套类型
In-Line Knuckle Style



偏置接合套类型
Offset Knuckle Style



不同的固定方式
Mounting variations



如需获得产品3D模型图，请联系 WWW.FORND.COM

600 系列	径向载荷 Radial Load	轴向载荷 Axial Load
最大静载荷 Max static load	670N	1560N
平均极限载荷 Average ultimate load	1100N	2500N

800 系列	径向载荷 Radial Load	轴向载荷 Axial Load
最大静载荷 Max static load	1000N	2000N
平均极限载荷 Average ultimate load	1900N	4900N

1. Material and surface treatment:
Main body : Nylon with Pberglass

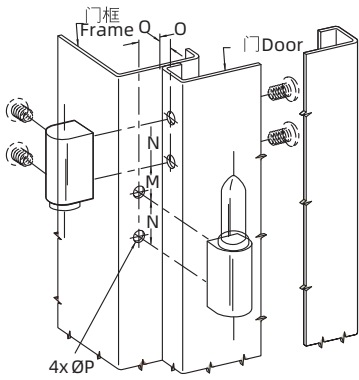
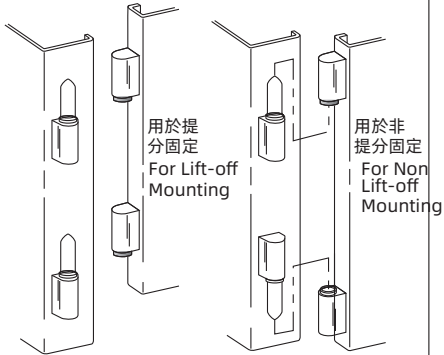
1. 材质及表面处理:
主体: 尼龙加玻纤

系列 Series	螺纹孔 Tapped Hole	尺寸 Dimensions								零件号 Part Number		
		A	B	C	D	E, F, G	H	I	J	同轴接合套类型 In-Line Knuckle Style	偏置接合套类型 Offset Knuckle Style	
										Type A	Type B	
600	M5	31	16.7	14.3	21.5	9.5	19	7	58	H1-2304-620	H1-2304-621	H1-2304-622
800	M6	41.3	22.2	19	28.5	12.7	25.5	9.5	78	H1-2304-820	H1-2304-821	H1-2304-822

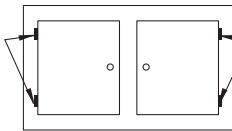
H1-2304

Screw-on Hinge

同轴接合套类型 In-Line Knuckle Style

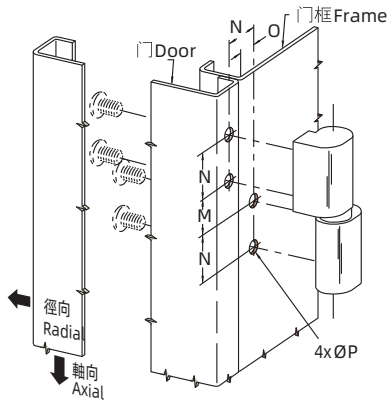
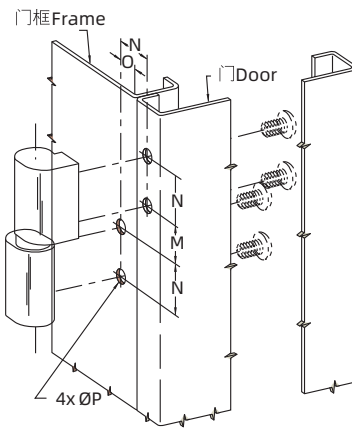
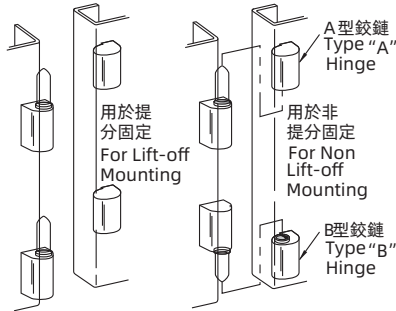


使用A型铰链
Use type A hinges



使用B型铰链
Use type B hinges

偏置接合套类型 Offset Knuckle Style



Installation Notes:
Screws not supplied
Maximum tightening torque of screw: 2.8 N/m

Calculate screw length using the following formula:
Door thickness + adjustment value

安装说明：
不提供螺钉
螺钉最大拧紧力矩：2.8N/m

使用以下公式计算螺钉长度：
门板厚度 + 调节值

系列 Series	调节值 Adjustment Value	
	同轴 In-Line	偏置 Offset
600	4.8	6.5 Min. to 9.5 Max.
800	6.4	9.5 Min. to 12.7 Max.

1. Material and surface treatment:
Main body : Nylon with Pberglass

1. 材质及表面处理:
主体：尼龙加玻纤

如需获得产品 3D 模型图，请联系 WWW.FORND.COM

系列 Series	安装尺寸 Installation Dimensions			
	M	N	O	P
600	14.3(+0.0 -0.3)	19(+0.2 -0.1)	9.5(+0.3 -0.1)	5.4(+0.1 -0.0)
800	19.0(+0.0 -0.3)	25.5(+0.1 -0.2)	12.7(+0.2 -0.1)	6.7(+0.1 -0.0)