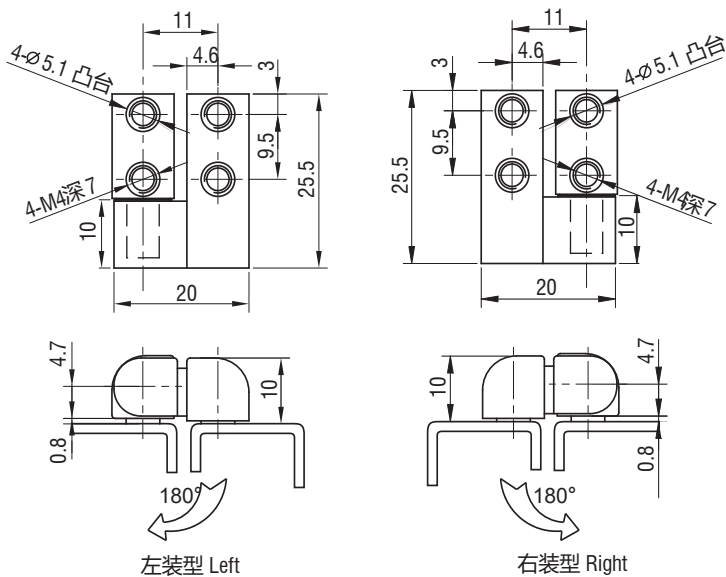


Lift-off Hinge

**H1-2300**



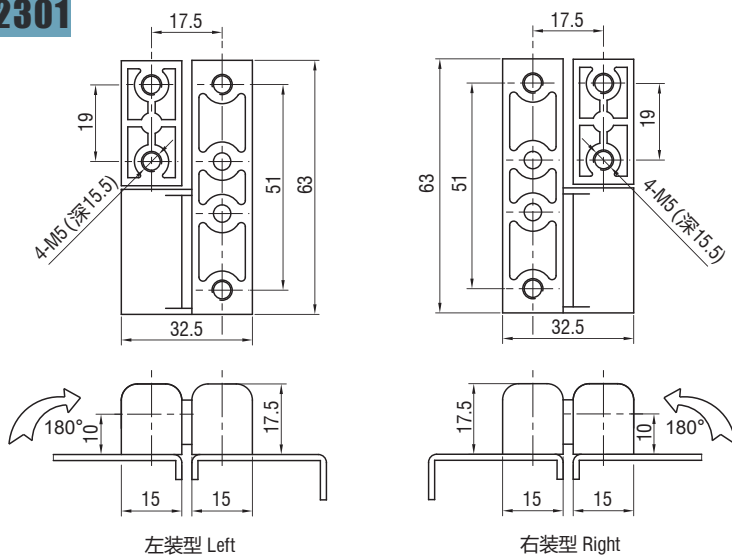
1. Material and surface treatment:  
Main body : Zamak DIN-EN 1774-ZnAl4Cu1

1. 材质及表面处理:  
主体: 5#锌合金

螺丝孔 Screw Hole M4		螺丝孔 Screw Hole 6-32	
A 型 (左装) Version A (Left)	B 型 (右装) Version B (Right)	A 型 (左装) Version A (Left)	B 型 (右装) Version B (Right)
H1-2300-141	H1-2300-142	H1-2300-111	H1-2300-112

Lift-off Hinge

**H1-2301**



1. Material and surface treatment:  
Main body : Zamak DIN-EN 1774-ZnAl4Cu1 or SUS304

1. 材质及表面处理:  
主体: 5#锌合金 或 SUS304

	喷塑黑 Black Powder Coated	亮铬 Bright Chrome	SUS304
Version A (Left) A 型 (左装)	H1-2301-40-L	H1-2301-30-L	H1-2301-A1-L
Version B (Right) B 型 (右装)	H1-2301-40-R	H1-2301-30-R	H1-2301-A1-R

如需获得产品 3D 模型图，请联系 WWW.FORND.COM