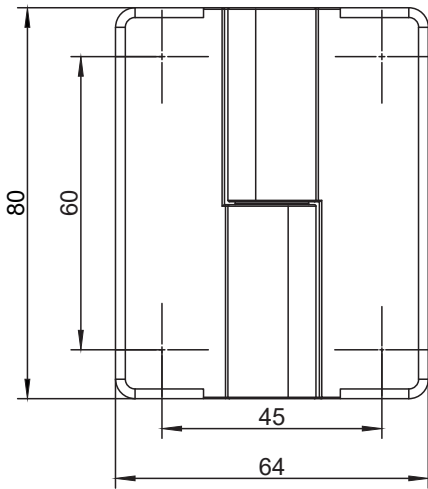
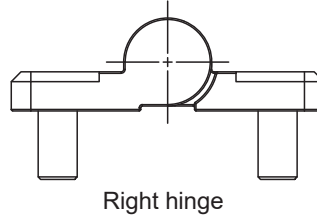
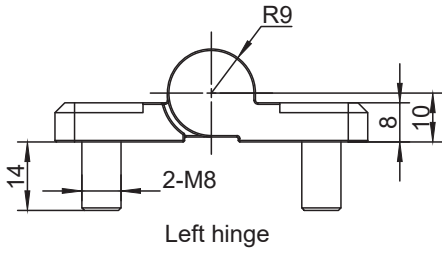


**H1-2109**

Screw-on Hinge



	喷塑黑 Black Powder Coated	纳米喷漆 (银亚光) NM spray painting (matte silver)
左 Left	H1-2109-40L	H1-2109-30L
右 Right	H1-2109-40R	H1-2109-30R

1. Material and surface treatment:  
Main body : Zamak DIN-EN 1774-ZnAl4Cu1

1. 材质及表面处理:  
主体: 5#锌合金

如需获得产品 3D 模型图 , 请联系 WWW.FORND.COM