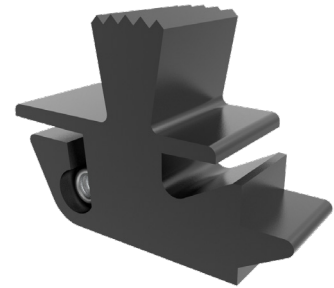
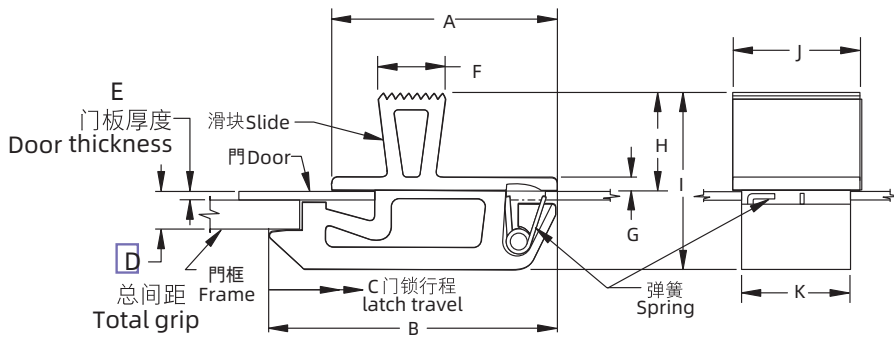


# 按压式门锁 Push-to-Close Latch

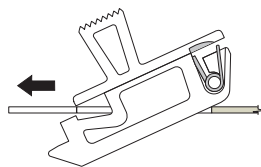
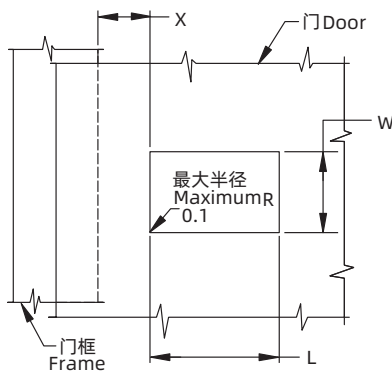
## F-1901 Push-to-Close Latch



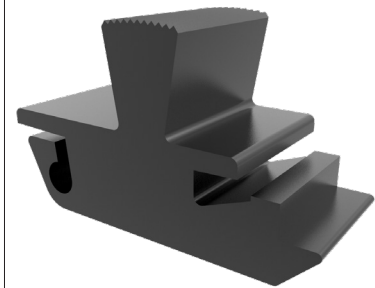
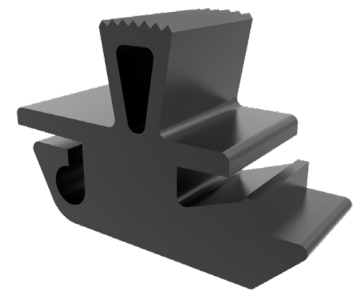
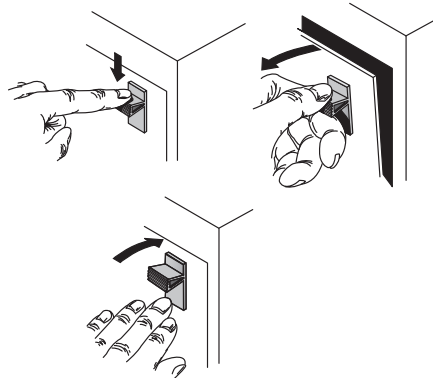
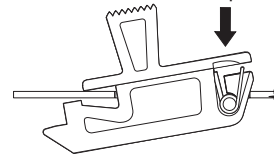
2. 滑动锁的前部穿过孔洞
2. Slip front of latch through hole
- Push forward.

### 安装 Installation

1. 准备一个无毛刺的安装孔
1. Prepare burr-free hole



3. 将门锁的后端卡紧入位位置
3. Snap back end of latch into position



大小 Size	安装 Installation		
	L	W	X
小型 Small	8.33±0.05	4.57±0.05	4.8±0.8
中型 Medium	12.7±0.1	7.8±0.05	6.4±0.8
大型 Large	22.2±0.1	14.3±0.1	9.5±0.8

E 门板厚度 Door Thickness	D 总间距 Total Grip	尺寸 Dimensions										零件号 Part Number	大小 Size
		A	B	C	F	G	H	I	J	K			
0.76±0.08	2.54±0.13	11.9	15.1	3	4.0	0.8	5.6	11.1	6.0	4.4	F-1901-310-25	小型 Small	
1±0.1	3±0.1	18	22.5	4	5.5	1.5	8.5	15.5	9.5	7.5	F-1901-412-25	中型 Medium	
1.2+0.2-0	4.8±0.1	29	36	4.3	9	2	13	22.5	16.5	14	F-1901-519-25	大型 Large	

1. Material and surface treatment:  
Latch: PC/ABS, black  
Spring: Stainless steel

2. Performance Details  
Max. working load:  
Small: 25 N (5 lbf)  
Medium: 90 N (20 lbf)  
Large: 130 N (29 lbf)  
Operating temperature range:  
-40°C (-40°F) to 60°C (140°F)  
Flammability rating: UL94-V0

1. 材质及表面处理:  
门锁: PC/ABS, 黑色  
弹簧: 不锈钢

2. 性能详述  
最大工作载荷:  
小型: 25N  
中型: 90N  
大型: 130N  
工作温度范围: -40°C到 60°C  
阻燃等级: UL94-V0

如需获得产品 3D 模型图，请联系 WWW.FORND.COM