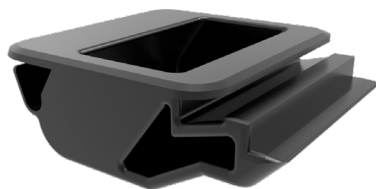
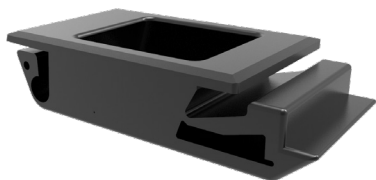
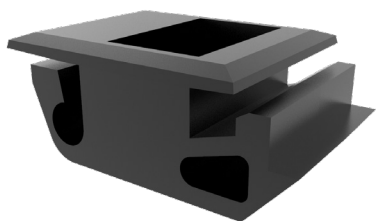
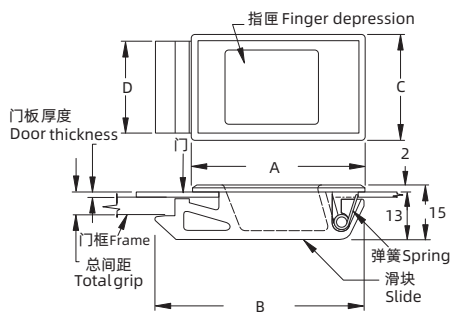


Push-to-Close Latch

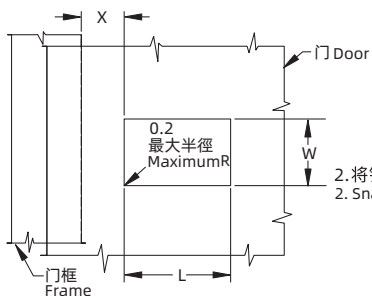
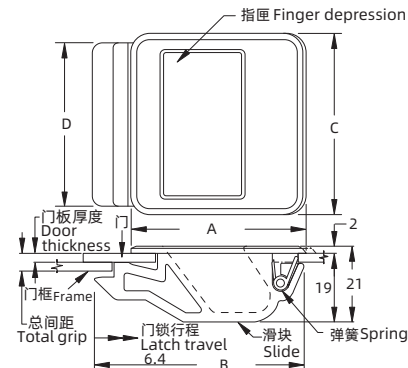
F-1905



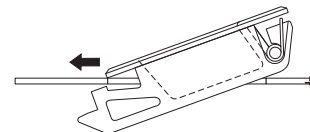
微型、小型和中型
Mini, Small and Medium



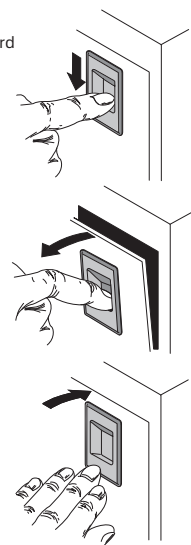
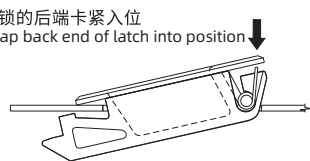
大型 (加深指匣)
Large (deeper depression)



1. 滑动锁的前部穿过孔洞, 按压向前
1. Slip front of latch through hole, push forward



2. 将锁的后端卡紧入位
2. Snap back end of latch into position



请 联系 WWW.FORND.COM
如需获得产品 3D 模型图

1. Material and surface treatment:
Latch: ABS, black
Spring: Stainless steel

2. Performance Details
90 series 140 N (32 lbf)
40 series 180 N (40 lbf)
50 and 99 series 220 N (50 lbf)
Operating temperature range:
-40°C (-40°F) to 60°C (140°F)

1. 材质及表面处理:
门锁: ABS, 黑色
弹簧: 不锈钢

2. 性能详述
90系列: 140N
40系列: 180N
50和99系列: 220N
工作温度范围: -40°C到60°C
阻燃等级: UL94-HB或UL94-V0

系列 Series	安装 Installation		
	L	W	X
微型 Mini	22.0 ± 0.1	22.4 ± 0.1	8.5 ± 0.7
小型 Small	38.1 ± 0.1	25.4 ± 0.1	12.7 ± 0.7
中型 Medium		44.5 ± 0.1	
大型 Large			

大小 Size	门板厚度 Door Thickness	总间距 Total Grip	尺寸 Dimensions				零件号 Part Number	
			A	B	C	D	UL94-HB	UL94-V0
微型 Mini	1.3 ± 0.1	6.4 ± 0.1	31	35	25	22	F-1905-113-12	F-1905-113-25
	1.5 ± 0.1	6.4 ± 0.1	31	35	25	22	F-1905-115-12	F-1905-115-25
小型 Small	1.3 ± 0.1	6.4 ± 0.1	47	57	28	25	F-1905-213-12	F-1905-213-25
	1.6 ± 0.1	6.4 ± 0.1	47	57	28	25	F-1905-216-12	F-1905-216-25
中型 Medium	2.2 ± 0.1	6.4 ± 0.1	47	57	48	44	F-1905-322-12	F-1905-322-25
大型 Large	2.2 ± 0.1	6.4 ± 0.1	48	57	50	44	F-1905-422-12	F-1905-422-25