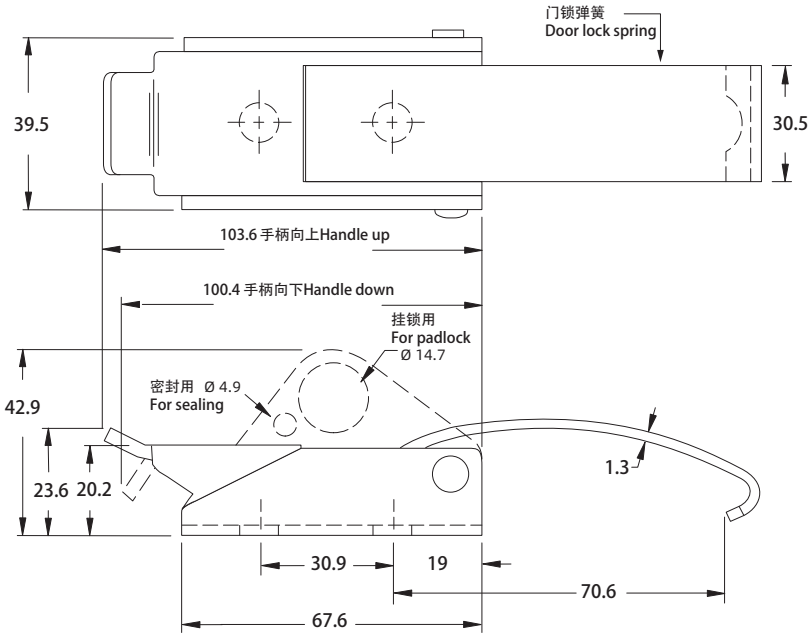


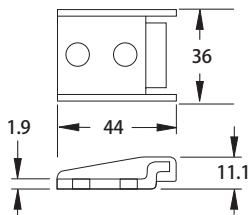
F-1643

Draw Latch

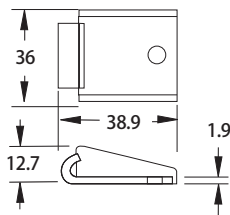


保持器 Retainer

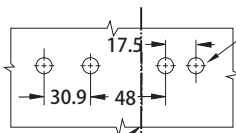
隐藏式双孔
Hidden double hole



外露式单孔
Exposed single hole

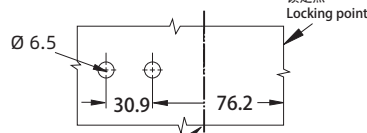


Ø 6.5
所有固定孔
All fixed holes



门/门框接合位置
Door/jamb joint location

只限门锁 Door lock only



门/门框接合位置
Door/jamb joint location

锁定点
Locking point

材料 material	门锁零件号 Part number door lock		
	杠杆手柄向上 Lever handle up	杠杆手柄向下 Lever handle down	挂锁锁定 Padlock locking
钢镀锌 Galvanized iron	F-1643-120-10	F-1643-220-10	F-1643-320-10
钢, 黑色粉末涂层 Steel, black powder coated	F-1643-120-40	F-1643-220-40	F-1643-320-40
SUS304	F-1643-120-A1	F-1643-220-A1	F-1643-320-A1

材料 material	门锁零件号 Part number door lock	
	隐藏式双孔 Hidden double hole	外露式单孔 Exposed single hole
钢镀锌 Galvanized iron	1643-103-10	1643-104-10
钢, 黑色粉末涂层 Steel, black powder coated	1643-103-40	1643-104-40
SUS304	1643-103-A1	1643-104-A1



1. Material and surface treatment:
Main body: SUS304 or Steel galvanizing or Steel, powder coated black

1. 材质及表面处理:
主体: SUS304 或 钢镀锌 或 钢, 粉末涂层黑

如需获得产品 3D 模型图, 请联系 WWW.FORND.COM