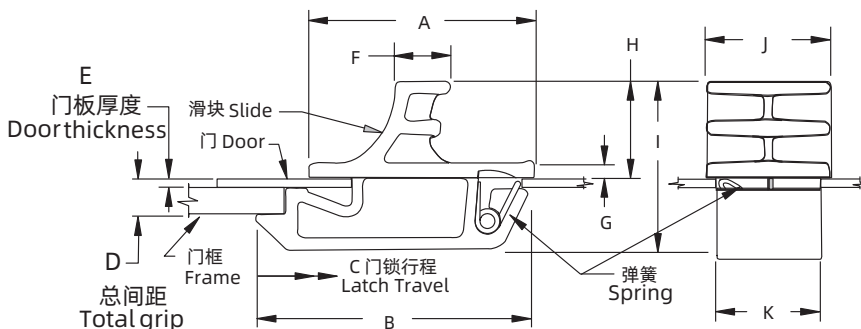


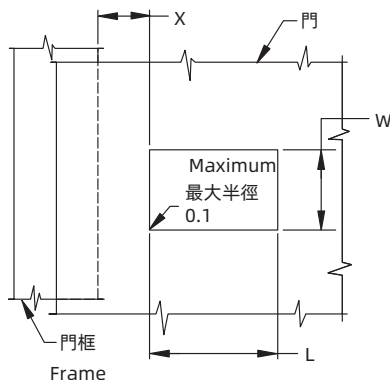
Push-to-Close Latch

F-1900

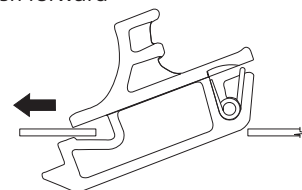


安装 Installation

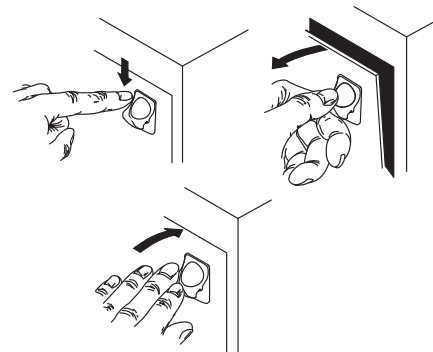
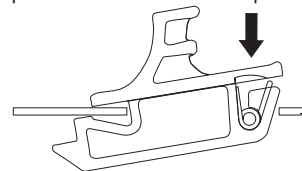
1. 准备一个无毛刺的安装孔
1. Prepare burr-free hole



2. 滑动锁的前部穿过孔洞
2. Slip front of latch through hole
Push forward



3. 将锁的后端卡紧入位
3. Snap back end of latch into position



如需获得产品 3D 模型图，请联系 WWW.FORND.COM

1. Material and surface treatment:
Latch: PC/ABS, black
Spring: Stainless steel

2. Performance Details
Max. working load:
Medium: 90 N (20 lbf)
Large: 130 N (29 lbf)
Operating temperature range:
-40°C (-40°F) to 60°C (140°F)
Flammability rating: UL94-V0

1. 材质及表面处理:
门锁: PC/ABS, 黑色
弹簧: 不锈钢

2. 性能详述
最大工作载荷:
中型: 90N
大型: 130N
工作温度范围: -40°C 到 60°C
阻燃等级: UL94-V0

大小 Size	安装 Installation		
	L	W	X
中型 Medium	12.7±0.1	7.8±0.05	6.4±0.8
大型 Large	22.2±0.1	14.3±0.1	9.5±0.8

E 门板厚度 Door Thickness	D 总间距 Total Grip	尺寸 Dimensions									零件号 Part Number	大小 Size
		A	B	C	F	G	H	I	J	K		
1±0.1	3±0.1	19	22.2	4	5.1	1.5	8.3	15.5	9.5	7.6	F-1900-412-25	中型 Medium
1.2+0.2-0	4.8±0.1	30.1	36.2	4.3	7.2	2.2	12.8	22.4	16.5	14	F-1900-519-25	大型 Large