

quarter turn lock

D3-1311

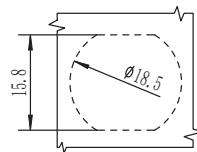
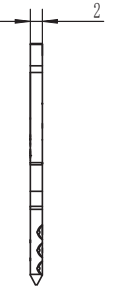
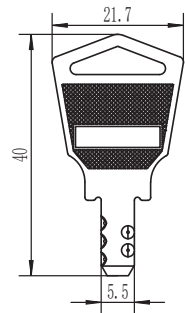
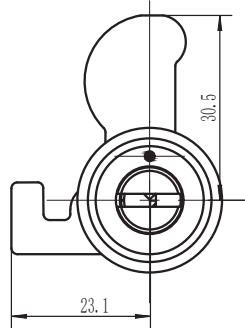
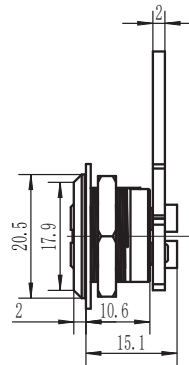
D-1311



RL

D-1311

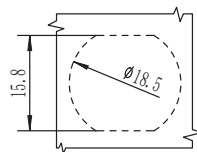
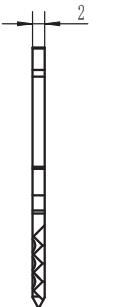
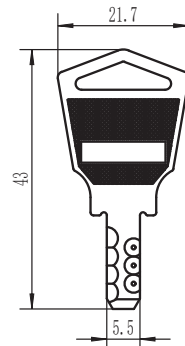
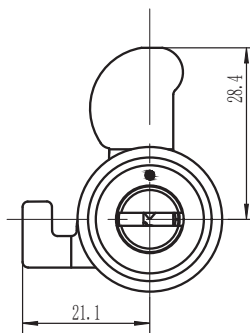
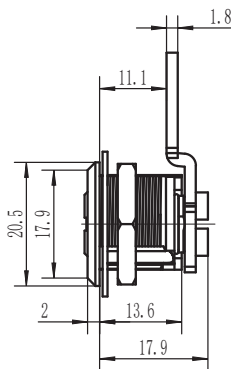
IP40



D-1312



D-1312



如需获得产品3D模型图，请联系 WWW.FORND.COM

1. Material and surface treatment:
Main body: Brass chrome plating or Zamak
DIN-EN 1774-ZnAl4Cu1
Steel bolt: iron galvanized

2. Performance parameters:
Protection class: IP40

1. 材质及表面处理:
主体: 黄铜镀铬 或 5#锌合金
钢栓: 铁镀锌

2. 性能参数:
防护等级: IP40